

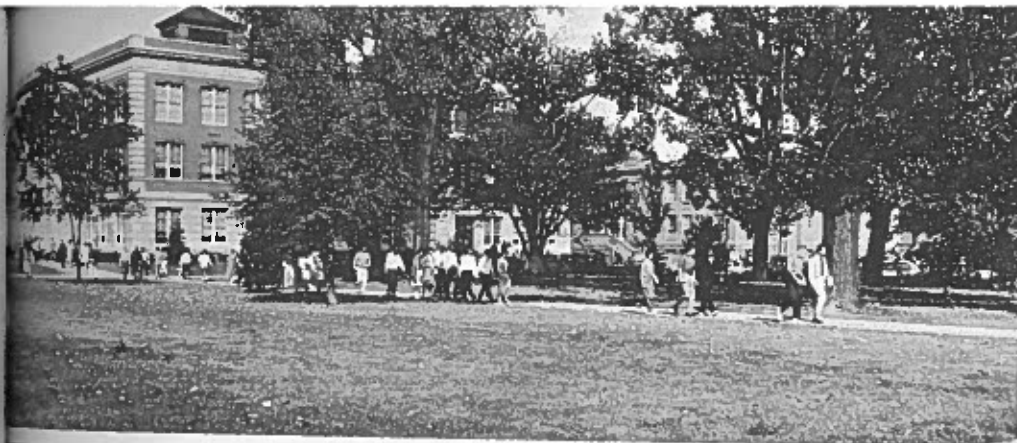
- SAMUEL M. MAYFIELD, 1936. B.S., B.A., Berea College; Ph.D., University of Chicago.  
*Professor Emeritus of Geology*
- REA MCCAIN, 1914. B.A., National Normal University; B.A., Antioch College; M.A., Columbia University; Ph.D., New York University.  
*Professor Emeritus of English*
- CHARLES H. OTIS, 1930. B.A., Ph.D., University of Michigan.  
*Professor Emeritus of Biology*
- JAMES ROBERT OVERMAN, 1914. B.A., Indiana University; M.A., Columbia University; Ph.D., University of Michigan; D.Sc., Bowling Green State University.  
*Dean Emeritus and Professor Emeritus of Mathematics*
- BENJAMIN L. PIERCE, 1939. B.A., Oberlin College; M.A., Columbia University; J.D., University of Michigan. (Licensed attorney in Ohio)  
*Dean Emeritus and Professor Emeritus of Business Administration*
- CECIL L. REW, 1935. B.Ph., University of Chicago; M.A., Ph.D., University of Illinois.  
*Professor Emeritus of Foreign Language*
- C. GLENN SWANSON, 1934. B.A., M.A., Colorado State College of Education; Ph.D., New York University.  
*Professor Emeritus of Sociology*
- FLORENCE J. WILLIAMSON, 1926. B.A., Cedarville College; M.A., Ph.D., Ohio State University.  
*Professor Emeritus of Education*

## FACULTY

- RALPH G. HARSHMAN, 1936. B.S.Ed., Ohio Northern University; M.A., Ph.D., Ohio State University.  
*President; Professor of Business Administration*
- LLOYD A. HELMS, 1938. B.A., DePauw University; M.A., Ph.D., University of Illinois.  
*Professor of Economics; Dean, Graduate School; Secretary of the Faculty*
- GILBERT ABCARIAN, 1960. B.A., M.A., Ph.D., University of California.  
*Assistant Professor of Political Science*
- WILBUR J. ABELL, 1947. B.S., Millikin University; M.S., University of Illinois; Chartered Life Underwriter; Chartered Property-Casualty Underwriter.  
*Associate Professor of Business Administration*
- G. GERALD ACKER, 1946. B.A., Allegheny College; M.S., University of Oklahoma.  
*Associate Professor of Biology*
- WILLIAM D. ALEXANDER, 1946. B.S.M., Mount Union College; M.S., North Texas State University; Violin student of Mischa Mischakoff; 'Cello student of Arthur Bachman.  
*Associate Professor of Music*
- WARREN S. ALLEN, 1946. B.M., Southwestern College; M.M., University of Michigan; Student of Martial Singher, Juilliard School of Music.  
*Associate Professor of Music*
- LIUDA L. ALSSEN, 1962. Diploma, University of Paris; M.A., University of Nebraska.  
*Instructor in German and Russian*
- CHARLES D. AMERINGER, 1959. B.A., University of Wisconsin; M.A., Ph.D., The Fletcher School of Law and Diplomacy, Tufts University.  
*Assistant Professor of History*
- HANNS K. ANDERS, 1957. B.A., Oberlin College; M.S., Ph.D., Ohio State University.  
*Assistant Professor of Chemistry*

- HAROLD ANDERSON, 1942. B.A., Otterbein College; M.A., University of Michigan; Ped.D., Otterbein College.  
*Professor of Health and Physical Education; Director of Athletics; Head Basketball Coach*
- IRIS E. ANDREWS, 1945. B.S., Battle Creek College; M.A., University of Michigan.  
*Associate Professor of Health and Physical Education*
- DIANA LEE ARMSTRONG, 1961. B.S.Ed., Bowling Green State University.  
*Laboratory Instructor in Education*
- FRANK C. ARNOLD, 1948. B.S., M.A., Ohio State University; Ph.D., Syracuse University.  
*Professor of Psychology; Director of Counseling Center*
- JOSEPH L. ARNOLD, 1962. B.A., Denison University; M.A., Ohio State University.  
*Instructor in History*
- ROBERT T. AUSTIN, 1946. B.Ed., University of Toledo; M.Ed., Bowling Green State University.  
*Assistant Professor of Industrial Arts*
- FLORENCE E. BAIRD, 1925. B.A., M.A., Ohio State University.  
*Associate Professor of Romance Languages*
- FRANK BALDANZA, JR., 1957. B.A., Oberlin College; M.A., University of Chicago; Ph.D., Cornell University.  
*Associate Professor of English*
- JOSEPH K. BALOGH, 1949. B.S.Ed., Pennsylvania State College at California; M.Litt., Ph.D., University of Pittsburgh.  
*Professor of Sociology*
- VIRON L. BARNHILL, 1961. B.A., M.A., Tulane University; Ph.D., University of Michigan.  
*Instructor in English*
- CHARLES ALDEN BARRELL, 1940. B.A., Hampden-Sydney College; M.A., University of Virginia; Ph.D., Ohio State University.  
*Professor of Political Science; Chairman, Department of Political Science*
- JAMES ROBERT BASHORE, JR., 1948. B.S., University of Wisconsin; M.A., Bowling Green State University; Ph.D., University of Wisconsin.  
*Assistant Professor of English*
- OTTO F. BAUER, 1961. B.S., M.A., Ph.D., Northwestern University.  
*Instructor in Speech; Forensics Coach*
- ANTHONY B. BAYNARD, 1946. B.A., University of Scranton; M.A., Columbia University.  
*Assistant Professor of Romance Languages*
- F. EUGENE BEATTY, 1941. B.S.B.A., M.A., Bowling Green State University.  
*Associate Professor; Director, Department of Buildings and Facilities*
- RALPH L. BECK, 1949. B.S., Indiana State Teachers College; M.S., Indiana University; Ed.D., New York University.  
*Professor of Education*
- BRUCE BELLARD, 1948. B.S.Ed., M.Ed., Bowling Green State University.  
*Associate Professor of Health and Physical Education; Head Wrestling Coach*
- STEWART BERRY, 1956. B.S., M.A., University of Alabama; Ed.D., University of Cincinnati.  
*Associate Professor of Education*
- EDWIN R. BETTS, 1962. B.M., M.M., Eastman School of Music.  
*Associate Professor of Music*
- ARLO B. BOGGS, 1958. B.S., Marietta College; M.S., Purdue University; Ph.D., Ohio State University.  
*Associate Professor of Chemistry*

- S. ELWOOD BOHN, 1961. B.A., Concordia College; M.A., Ph.D., University of Nebraska.  
*Assistant Professor of Mathematics*
- JUDY A. BOHREN, 1962. B.S., University of Florida; M.F.A., University of North Carolina.  
*Instructor in Health and Physical Education*
- DEANNA J. BOLFA, 1962. B.S., Bowling Green State University.  
*Assistant Instructor in Home Economics*
- EDWIN C. BOMELI, 1956. B.S.B.A., Ohio State University; M.A., Butler University; Certified Public Accountant (Ohio) (Indiana).  
*Associate Professor of Accounting; Chairman, Department of Accounting*
- ROBERT O. BONE, 1948. B.S.Ed., University of Illinois; M.A., Columbia University.  
*Associate Professor of Art*
- CHARLES R. BOUGHTON, 1961. B.A., M.A., University of Illinois; Ph.D., Northwestern University.  
*Instructor in Speech*
- PENELOPE BOUSSOULAS, 1959. B.S., Eastern Michigan University; M.A., University of Michigan.  
*Instructor in Health and Physical Education*
- DONALD W. BOWMAN, 1943. B.A., Mount Union College; M.A., Ph.D., Ohio State University; Sc.D., Mount Union College.  
*Professor of Physics*
- MORGAN M. BRENT, 1957. B.S., M.S., Ph.D., Northwestern University.  
*Associate Professor of Biology*
- HUGH T. BROADLEY, 1961. B.A., Park College; M.A., Yale University; Ph.D., New York University.  
*Assistant Professor of Art*
- MELVIN E. BRODT, 1960. B.S., Miami University; M.S., University of Illinois.  
*Instructor in Health and Physical Education; Head Track and Cross Country Coach*
- JOSEPH C. BUFORD, 1948. B.Ed., M.S.Ed., Illinois State University; Ph.D., University of California.  
*Associate Professor of Geography*
- RICHARD K. BURDETTE, 1961. B.A., Wilmington College; M.S., Ohio University.  
*Instructor in Journalism; Adviser of The B-G News*
- HARVEY L. BURNETTE, 1960. B.S., University of South Carolina; M.D., Medical College of the State of South Carolina.  
*Associate Professor; University Physician*
- ALLEN D. BUSHONG, 1961. B.A., University of Miami; M.A., Ph.D., University of Florida.  
*Instructor in Geography*
- MARIE CAMPBELL, 1960. B.Ed., Southern Illinois University; M.A., George Peabody College; Ph.D., Indiana University.  
*Associate Professor of English*
- RICHARD C. CARPENTER, 1953. B.A., Tufts College; M.A., Ph.D., Boston University.  
*Professor of English*
- ROBERT L. CHAPMAN, 1957. B.M., M.A., State University of Iowa.  
*Assistant Professor of Music*
- EDWARD SCOTT CLAFLIN, 1947. B.A., Oberlin College; M.A., Ph.D., Yale University.  
*Associate Professor of Political Science*
- JEFF CLARK, 1960. B.A., M.A., University of Oklahoma; Ph.D., State University of Iowa.  
*Assistant Professor of Journalism*



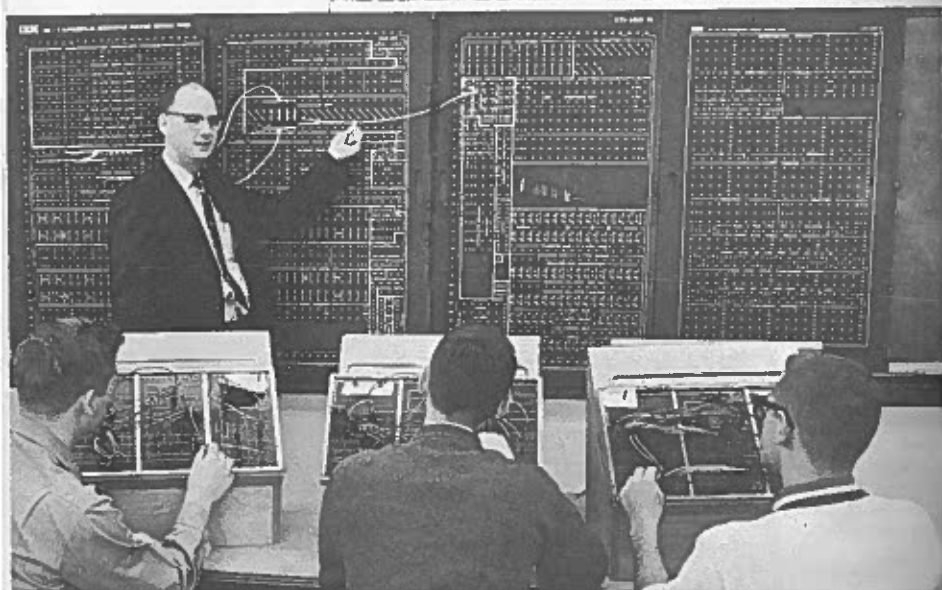
Library and Statistics Laboratory (above). IBM Model 1620 Computer 1620 is demonstrated in the Computer Laboratory (below).

## THE FACULTY

- JEROME M. CLUBB, 1961. B.A., M.A., University of Washington.  
*Instructor in History*
- JOHN R. COASH, 1949. B.A., Colorado College; M.A., University of Colorado; Ph.D., Yale University.  
*Professor of Geology; Chairman, Department of Geology*
- CHARLOTTE ELIZABETH COBB, 1961. B.M., M.M., Yale University.  
*Instructor in Music*
- J. RUSSELL COFFEY, 1948. B.A., M.A., Ohio State University; Ed.D., New York University.  
*Professor of Health and Physical Education*
- STANLEY K. COFFMAN, JR., 1962. B.A., Haverford College; M.A., Ph.D., Ohio State University.  
*Professor of English; Chairman, Department of English*
- JACOB COHEN, 1950. B.A., University of Manitoba; M.A., University of Cincinnati; Ph.D., University of Chicago.  
*Professor of Economics*
- GILBERT W. COOKE, 1937. B.S., M.A., University of Minnesota; Ph.D., University of Wisconsin.  
*Professor of Business Administration*
- SAMUEL M. COOPER, 1946. B.A., Oberlin College; M.A., New York University; Ed.D., Western Reserve University.  
*Professor of Health and Physical Education; Chairman, Department of Health and Physical Education; Head Swimming Coach*
- FORREST CREASON, 1951. B.A., Findlay College; M.S.Ed., Bowling Green State University.  
*Associate Professor of Health and Physical Education; Golf Coach; Athletic Ticket Manager*
- FLORENCE K. CURRIER, 1943. B.A., Ohio Wesleyan University.  
*Associate Professor; Dean of Women*
- JESSE J. CURRIER, 1940. B.A., Ohio Wesleyan University; M.A., Ohio State University.  
*Professor of Journalism; Director, School of Journalism*
- EDGAR F. DANIELS, 1953. B.A., Otterbein College; M.A., Ph.D., Stanford University.  
*Assistant Professor of English*
- HARRIET M. DANIELS, 1953. B.A., Wittenberg University; M.A., Northwestern University.  
*Assistant Professor; Head Resident, West Hall*
- JEANNETTE C. DANIELSON, 1962. B.S., M.A., Bowling Green State University.  
*Intern Instructor in English*
- JOHN R. DAVIDSON, 1946. B.S.Ed., Bowling Green State University; M.S., New York University; Ph.D., Ohio State University.  
*Associate Professor of Business Administration; Assistant Dean, College of Business Administration*
- RUSSELL DECKER, 1952. B.A., State University of Iowa; J.D., Drake University. (Licensed attorney in Ohio, Iowa, Federal Courts, and U. S. Supreme Court)  
*Professor of Business Administration; Adviser to the Student Court*
- IVAN E. DEN BESTEN, 1961. B.A., Calvin College; Ph.D., Northwestern University.  
*Instructor in Chemistry*
- RAYMOND W. DERR, 1952. B.S.Ed., Kansas State College of Pittsburgh; M.A., University of Kansas; Ph.D., University of Missouri.  
*Professor of Journalism*
- E. EUGENE DICKERMAN, 1936. B.A., Grand Island College; M.A., Ph.D., Northwestern University.  
*Professor of Biology*



Class in Business Law (above), experiment in time and motion study (right) and class demonstration in the Computer Center (below).



- HARVEY E. DONLEY, 1959. B.S.Ed., Central Missouri State College; M.A., Ph.D., University of Missouri; Certified Public Accountant (Indiana).  
*Associate Professor of Accounting*
- MABEL E. DRENNAN, 1946. B.A., M.A., Ohio Wesleyan University.  
*Associate Professor of Romance Languages*
- ROBERT E. DUDLEY, 1955. B.S.Ed., Ohio State University; M.S.Ed., Bowling Green State University.  
*Assistant Professor of Health and Physical Education; Assistant Football Coach*
- N. WILLIAM EASTERLY, 1957. B.A., West Virginia University; M.S., State University of Iowa; Ph.D., West Virginia University.  
*Assistant Professor of Biology*
- RICHARD ECKER, 1948. B.S.Ed., M.A., Ohio State University; Ed.D., Arizona State University.  
*Assistant Professor of Music; Assistant Director of Bands*
- FREDERICK W. ECKMAN, 1961. B.A., M.A., Ph.D., Ohio State University.  
*Assistant Professor of English*
- GERALD G. EGERT, 1960. B.A., Western Michigan University; M.A., Ph.D., University of Michigan.  
*Assistant Professor of History.*
- WILLIAM BURLEY ELDERBROCK, 1961. B.A., Bowling Green State University; M.D., Ohio State University.  
*Assistant Professor; University Physician*
- CATHERINE ELLIS, 1948. B.S.Ed., Ohio Northern University; B.S. in L.S., Western Reserve University.  
*Assistant Professor; Librarian*
- DAVID G. ELSASS, 1960. B.S., M.S., Bowling Green State University.  
*Assistant Professor of Education; Assistant to the Dean, College of Education*
- GERTRUDE M. EPPLER, 1941. B.S., Eastern Michigan University; M.S., University of Michigan.  
*Professor of Health and Physical Education; Head of Women's Division of Health and Physical Education*
- EMERSON C. ERB, JR., 1960. B.S., M.B.A., D.B.A., Indiana University; Certified Public Accountant (Indiana).  
*Assistant Professor of Accounting*
- JOHN E. EXNER, JR., 1962. B.S., M.S., Trinity University; Ph.D., Cornell University.  
*Assistant Professor of Psychology*
- LEON E. FAULEY, 1930. B.A., Wichita University; B.M., University of Kansas; M.A., Columbia University.  
*Professor of Music*
- CHARLES P. FISHBAUGH, 1961. B.A., Western Reserve University; M.A., Indiana University.  
*Instructor in Economics*
- MERLE E. FLAMM, 1948.\* B.A., Ashland College; M.A., University of Michigan.  
*Assistant Professor of Physics*
- LYLE REXFORD FLETCHER, 1946. B.A., Ohio University; M.A., Ohio State University.  
*Assistant Professor of Geography*
- GILES R. FLOYD, 1948. B.A., Wofford College; M.A., Vanderbilt University; Ph.D., State University of Iowa.  
*Associate Professor of English*
- MICHAEL J. FLYS, 1961. Licentiate in Romance Philology, Central University of Madrid; Ph.D., University of Madrid.  
*Assistant Professor of Romance Languages*

\*Not continuous service.

- STEPHEN F. FOGLE, 1962. B.A., Amherst College; M.A., Syracuse University; Ph.D., University of Illinois.  
*Visiting Professor of English*
- WILLARD FOX, 1959. B.S., Southeast Missouri State College; M.A., University of Wyoming; Ed.D., Wayne State University.  
*Associate Professor of Education; Chairman, Department of Education; Director, Office of Field Services*
- GEORGE H. FRACK, 1948. B.A., Muskingum College; M.A., Ohio State University.  
*Assistant State Supervisor of Distributive Education*
- RALPH W. FRANK, 1956. B.S., M.A., Kent State University; Ph.D., Northwestern University.  
*Associate Professor of Geography*
- WERNER G. FRANK, 1958. B.A., M.B.A., University of Chicago; Ph.D., University of Illinois; Certified Public Accountant (Illinois).  
*Associate Professor of Accounting; Director, Computer Center*
- CECIL M. FREEBURNE, 1948. B.S.Ed., Kansas State Teachers College at Emporia; M.A., Ph.D., State University of Iowa.  
*Professor of Psychology; Chairman, Department of Psychology*
- GAYLE E. FRISBY, 1962. B.S., Bowling Green State University.  
*Assistant Instructor in Health and Physical Education*
- EVA-MARIA GABOR, 1961. Graduate (Abitur), Peter-A.-Silbermann Schule, Berlin, Germany; B.A., Cornell College; M.A., State University of Iowa.  
*Instructor in German*
- DAVID E. GARDINIER, 1960. B.A., New York State College for Teachers at Albany; M.A., Ph.D., Yale University.  
*Assistant Professor of History*
- RALPH H. GEER, 1948. B.A., Defiance College; M.A., Ohio State University; Ed.D., Western Reserve University.  
*Professor of Education; Director, Summer School and Off-Campus Programs*
- HELEN WISE GERTSEN, 1960. B.S.Ed., M.Ed., Bowling Green State University.  
*Instructor in Education*
- ROBERT M. GIBSON, 1956. B.S.Ed., Youngstown College; M.Ed., Bowling Green State University.  
*Instructor in Health and Physical Education; Assistant Football Coach*
- STUART R. GIVENS, 1952. B.A., George Washington University; M.A., Ph.D., Stanford University.  
*Associate Professor of History*
- DAVID S. GLASMIRE, 1958. B.M., M.M., Cincinnati Conservatory of Music.  
*Assistant Professor of Music*
- M. LEE GODDARD, 1962. B.A., Bowling Green College of Commerce, Kentucky; M.B.A., Ed.D., Indiana University.  
*Assistant Professor of Business Education*
- DIANE R. GOODRICH, 1962. B.A., Knox College; M.A., State University of Iowa.  
*Instructor in Romance Languages*
- ROBERT P. GOODWIN, 1961. M.A., Fordham University; Ph.D., Georgetown University.  
*Assistant Professor of Philosophy*
- JAMES Q. GRAHAM, JR., 1960. B.S., Columbia University School of General Studies; M.A., Columbia University; Ph.D., Ohio State University.  
*Instructor in History*
- LOUIS C. GRAUE, 1959. B.S., M.S., University of Chicago; Ph.D., Indiana University.  
*Associate Professor of Mathematics*

- MARIAN E. GRAY, 1956. B.A., University of Michigan; M.S. in L.S., University of Wisconsin.  
*Instructor; Librarian*
- JOHN T. GREENE, 1955. B.A., Wayne State University; M.A., University of Oregon; Ph.D., University of Illinois.  
*Assistant Professor of Psychology*
- ALICE GREINER, 1949. B.S.Ed., University of Cincinnati; M.S.Ed., Bowling Green State University.  
*Associate Professor of Speech*
- CYNTHIA S. GROAT, 1962. B.A., Wellesley College; M.A., Brown University.  
*Laboratory Assistant in Biology*
- H. THEODORE GROAT, 1961. B.A., M.A., Bowling Green State University; Ph.D., Brown University.  
*Instructor in Sociology*
- JOHN J. GROSS, 1962. B.S., M.A., University of Oregon; Ph.D., State University of Iowa.  
*Associate Professor of English*
- ANNA N. GRÝTING, 1927. B.S., University of Minnesota; M.A., Columbia University.  
*Assistant Professor of Mathematics*
- ROBERT M. GUION, 1952. B.A., University of Iowa; M.S., Ph.D., Purdue University.  
*Associate Professor of Psychology*
- MEARL R. GUTHRIE, JR., 1954. B.S., M.A., Ball State Teachers College; Ph.D., University of Minnesota.  
*Professor of Business Education; Chairman, Department of Business Education*
- CARL D. HALL, 1957. B.S., Southwest Missouri State College; M.F.A., State University of Iowa.  
*Assistant Professor of Art*
- W. HEINLEN HALL, 1936. B.A., Muskingum College; Ph.D., Ohio State University.  
*Professor of Chemistry; Chairman, Department of Chemistry*
- CARL W. HALLBERG, 1951. B.S., M.S., Ph.D., University of Michigan.  
*Professor of Biology*
- GEORGIA HALSTEAD, 1959. B.S. in Home Ec., Purdue University; M.A., Michigan State University; Ph.D., Pennsylvania State University.  
*Professor of Home Economics; Chairman, Department of Home Economics*
- ERNEST S. HAMILTON, 1956. B.S., University of Massachusetts; M.S., Ph.D., Rutgers University.  
*Associate Professor of Biology*
- AVERILL J. HAMMER, 1946. B.S., Parsons College; M.S., Ph.D., Iowa State University.  
*Professor of Chemistry*
- HAROLD T. HAMRE, 1946. B.S., M.S., University of Wisconsin; Ph.D., Ohio State University.  
*Associate Professor of Biology*
- WILLIAM E. HARRINGTON, 1959. B.S., Baldwin-Wallace College; M.A., Ohio State University; Ed.D., Western Reserve University.  
*Associate Professor of Education; Acting Dean, College of Education*
- HAROLD L. HASSELSCHWERT, 1961. B.S., M.A., Bowling Green State University.  
*Instructor in Art*
- MARGARET C. HAYGOOD, 1958. B.S., B.S. in Library Science, University of Illinois.  
*Assistant Professor; Institutional Services Officer*
- ROBERT T. HAZZARD, 1962. B.F.A., Illinois Wesleyan University; M.A., Michigan State University; Ph.D., University of Minnesota.  
*Instructor in Speech*

\*Not continuous service.

- HELEN W. HENDERSON, 1925. B.Ph., University of Chicago; M.A., Columbia University.  
*Professor of Home Economics*
- ROBERT D. HENDERSON, 1954. B.B.A., Westminster College; M.B.A., Ohio State University; Ph.D., University of Pittsburgh.  
*Professor of Business Administration; Chairman, Department of Business Administration*
- JOHN H. HEPLER, 1949. B.A., M.A., Ohio Wesleyan University.  
*Assistant Professor of Speech; Designer-Technical Director, University Theatre*
- DALE C. HERBERT, 1952. B.S., M.Ed., Bowling Green State University.  
*Assistant Professor of Health and Physical Education; Assistant Basketball Coach; Supervisor of Facilities and Equipment, Athletic Department*
- GEORGE HERMAN, 1958. B.A., Brooklyn College; M.S., Ph.D., University of Michigan.  
*Associate Professor of Speech*
- LAURA E. HESTON, 1918. B.S., Ohio State University; M.S., University of Chicago.  
*Professor of Home Economics*
- J. LEVAN HILL, 1948. B.S.Ed., Pennsylvania State College at California; M.Ed., Ed.D., Pennsylvania State University.  
*Professor of Industrial Arts; Chairman, Department of Industrial Arts and Engineering Drawing*
- JOHN HILTNER, JR., 1958. B.A., M.A., State University of Iowa; Ph.D., Northwestern University.  
*Assistant Professor of Geography*
- MARY C. HISSONG, 1938.\* B.S., M.A., Ph.D., Ohio State University.  
*Associate Professor of English*
- RICHARD D. HOARE, 1957. B.A., Augustana College; M.A., Ph.D., University of Missouri.  
*Assistant Professor of Geology*
- JAMES E. HOF, 1951.\* B.A., M.A., Bowling Green State University.  
*Assistant Professor; Director of Alumni Services; Executive Director, Bowling Green State University Foundation, Inc.*
- ROBERT W. HOHN, 1960. B.A., B.M., B.M.Ed., Otterbein College; M.M., College Conservatory of Music, Cincinnati; D.M.Ed., Indiana University.  
*Associate Professor of Music*
- AGNES MARIE HOOLEY, 1954. B.S., University of Bridgeport; M.A., Teachers College, Columbia University; Ph.D., University of Wisconsin.  
*Professor of Health and Physical Education*
- ROBERT ROGERS HUBACH, 1947. B.A., University of Kansas City; M.A., University of Colorado; Ph.D., Indiana University.  
*Associate Professor of English*
- HOWARD B. HUFFMAN, 1948. B.S.Ed., Wilmington College; M.B.A., University of Denver; Ph.D., Ohio State University.  
*Associate Professor of Business Administration*
- WAYNE S. HUFFMAN, 1938. B.A., Findlay College; M.A., University of Michigan; D.S.S., Findlay College.  
*Professor of History*
- PEGGY HURST, 1955. B.A., Wilson College; M.A., Ph.D., University of Wisconsin.  
*Assistant Professor of Chemistry*
- WILBERT HUTTON, 1959. B.S., University of Denver; Ph.D., Michigan State University.  
*Assistant Professor of Chemistry*
- MELVIN HYMAN, 1952. B.A., Brooklyn College; M.A., Ph.D., Ohio State University.  
*Associate Professor of Speech; Director, Speech and Hearing Clinic*

\*Not continuous service.

- ROBERT W. INNIS, 1960. B.S., Central Michigan College; M.S., Stout Institute; Ed.D., Michigan State University.  
*Assistant Professor of Industrial Arts*
- WILLIAM B. JACKSON, 1957. B.A., M.A., University of Wisconsin; Sc.D., Johns Hopkins University.  
*Associate Professor of Biology*
- OLDRICH JICHA, 1949. B.A., Western Reserve University; M.B.A., Harvard University.  
*Assistant Professor of Business Administration*
- RONALD D. JONES, 1962. B.S., B.Th., Marion College, Indiana; M.S., Ph.D., University of Wisconsin.  
*Assistant Professor of Education*
- WARREN A. JOSEPH, 1961. B.S.Ed., M.S.Ed., New York State University of Potsdam; Ph.D., Boston University.  
*Assistant Professor of Music; Director of Choral Activities*
- HOWARD H. KANE, 1946. B.S.B.A., University of Dayton; B.S.Ed., M.A., Ohio State University; Certified Public Accountant (Ohio).  
*Associate Professor of Accounting*
- LOWRY B. KARNES, 1945. B.A., Muskingum College; M.A., Ph.D., Ohio State University.  
*Professor of Geography; Chairman, Department of Geography*
- ROBERT J. KEEFE, 1955. B.A., Brooklyn College; M.A., Ed.D., Columbia University.  
*Professor of Health and Physical Education; Tennis Coach*
- JAMES PAUL KENNEDY, 1936. B.A., William Penn College; B.M.Ed., M.M., Northwestern University; Ph.D., State University of Iowa; Study at the Matthey Pianoforte School, London, England.  
*Professor of Music; Director, School of Music*
- RUTH K. KILMER, 1947. B.S.Ed., Duquesne University; B.S. in L.S., Western Reserve University.  
*Assistant Professor; Librarian*
- RUBY L. KING, 1928. B.A., Hillsdale College; B.A. in L.S., University of Michigan.  
*Associate Professor; Librarian*
- THOMAS L. KINNEY, 1959. B.A., Swarthmore College; M.A., Ph.D., University of Michigan.  
*Instructor in English*
- WILLIAM A. KIRBY, 1961. B.A., M.A., University of Wyoming.  
*Instructor in Mathematics*
- LAURA DOUGLAS KIVLIN, 1961. B.S., University of Vermont; M.S., Ed.D., Pennsylvania State University.  
*Assistant Professor of Home Economics*
- DAVID M. KRABILL, 1946. B.A., College of Wooster; M.A., Ph.D., Ohio State University.  
*Professor of Mathematics*
- ESTHER KRABILL, 1962. B.S.Ed., Miami University; M.A., Ohio State University.  
*Instructor in Mathematics*
- ERVIN J. KREISCHER, 1937. B.S.Ed., Bowling Green State University.  
*Professor; Treasurer and Business Manager*
- HARRY KRUGER, 1961. B.M., M.M.Ed., New England Conservatory of Music.  
*Assistant Professor of Music; Director of Orchestral Activities*
- CHARLES J. LAKOFSKY, 1948. Diploma, Cleveland Institute of Art; B.F.A., The New York State College of Ceramics, Alfred University; M.A., Ohio State University.  
*Professor of Art*
- JAMES K. LARSON, 1962. B.A., Columbia University; M.A., Teachers College, Columbia University.  
*Intern Instructor in English*

- JAMES P. LATHAM, 1959. B.S.Ed., M.S.Ed., M.A., Ph.D., University of Pennsylvania.  
*Associate Professor of Geography*
- PAUL F. LEEDY, 1938. B.A., B.A. in L.S., M.A., Ph.D., University of Michigan.  
*Professor of English; Provost*
- J. FREDERICK LEETCH, 1961. B.S., Grove City College; M.A., Ph.D., Ohio State University.  
*Assistant Professor of Mathematics*
- LOWELL P. LELAND, 1946. B.A., Colby College; M.A., University of Maine; Ph.D., Ohio State University.  
*Associate Professor of English*
- BERNARD LINDEN, 1960. B.F.A., University of Pennsylvania; M.M., University of Michigan.  
*Instructor in Music*
- HERSCHEL LITHERLAND, 1941. B.A., Greenville College; M.A., University of South Dakota; Ph.D., University of Cincinnati.  
*Professor of Education*
- CLIFFORD A. LONG, 1959. B.S., M.S., Ph.D., University of Illinois.  
*Assistant Professor of Mathematics*
- DONALD S. LONGWORTH, 1949. B.S.Ed., M.A., Bowling Green State University; Ph.D., Ohio State University.  
*Associate Professor of Sociology; Chairman, Department of Sociology*
- MILFORD S. LOUGHEED, 1955. B.A.Sc., University of British Columbia; M.A., Ph.D., Princeton University.  
*Associate Professor of Geology*
- SAMUEL HARMAN LOWRIE, 1939. B.A., Rice Institute; M.A., Ph.D., Columbia University.  
*Professor of Sociology*
- JAMES R. LOWRY, 1962. B.S., M.B.A., Ohio State University.  
*Instructor in Business Administration*
- DOROTHY M. LUEDTKE, 1950. B.S.Ed., M.S.Ed., Bowling Green State University.  
*Assistant Professor of Health and Physical Education; Director, Intramural Activities for Women*
- BEVARS D. MABRY, 1959. B.B.A., University of Chattanooga; M.S., University of Tennessee; Ph.D., Tulane University.  
*Associate Professor of Economics*
- PAUL MAKARA, 1958. Diploma, Juilliard School of Music; B.M., M.M., Eastman School of Music.  
*Instructor in Music*
- WILLIAM GUY MALLORY, 1959. B.S.Ed., Miami University; M.S.Ed., Bowling Green State University.  
*Instructor in Health and Physical Education*
- JOSEPH J. MANCUSO, 1960. B.A., Carleton College; M.S., University of Wisconsin; Ph.D., Michigan State University.  
*Assistant Professor of Geology*
- MAURICE I. MANDELL, 1953. B.S., New York University; M.B.A., Syracuse University; D.B.A., Indiana University.  
*Professor of Business Administration*
- LEWIS F. MANHART, 1937. B.S.Ed., Bowling Green State University; M.A., Ohio State University.  
*Professor of Business Administration*
- JOHN H. MARSH, 1957. M.D., University of Buffalo.  
*Professor; Director of University Health Service*
- HARRY R. MATHIAS, 1931. B.A., Indiana Central College; M.A., Indiana University.  
*Associate Professor of Mathematics*

- DOROTHY O. MATHEWS,† 1962. B.A., Western Reserve University; M.A., Bowling Green State University; M.A., Ph.D., Western Reserve University.  
*Assistant Professor of English*
- RALPH W. McDONALD,†† 1951. B.A., Hendrix College; M.A., Ph.D., Duke University; LL.D., Hendrix College.  
*President Emeritus and Professor of Higher Education and Institutional Research*
- KENNETH H. MCFALL, 1943. B.S., Mount Union College; M.A., Ph.D., Western Reserve University.  
*Professor of Psychology; Vice President*
- ROBERT E. MCKAY, 1944. B.A., M.S., Ohio State University.  
*Assistant Professor of Physics; Director, Student Financial Aid*
- DONALD E. MCVICKER, 1962. B.A., M.A., University of Chicago.  
*Instructor in Sociology*
- VIRGINIA MERRELL, 1947. B.A., Bowling Green State University; M.A. in L.S., University of Michigan.  
*Assistant Professor; Librarian*
- FRANK G. MESERVE, 1945. B.A., University of Nebraska; M.A., Northwestern University; Ph.D., University of Nebraska.  
*Associate Professor of Biology*
- NORMAN J. MEYER, 1959. B.A., South Dakota University; Ph.D., University of Kansas.  
*Assistant Professor of Chemistry*
- FRANK L. MIESLE, 1948. B.A., M.A., Bowling Green State University; Ph.D., Ohio State University.  
*Associate Professor of Speech; Chairman, Department of Speech; Director, University Theatre*
- HARVEY D. MINER, 1947. B.S.Ed., Bowling Green State University; M.Ed., Ohio University.  
*Assistant Professor of Industrial Arts*
- OWEN D. MONTGOMERY, 1946. B.S.Ed., Ohio University; M.Ed., University of Pittsburgh.  
*Assistant Professor of Business Education*
- ERMA JEAN MORGAN, 1962. B.A., Bowling Green State University; M.A. in L.S., University of Michigan.  
*Instructor; Librarian*
- WALTER D. MORRIS, 1962. B.A., University of California at Los Angeles; M.A., Ph.D., University of Texas.  
*Assistant Professor of German; Chairman, Department of German and Russian*
- DOROTHY EVELYN MOULTON, 1946. B.A., Randolph-Macon Woman's College; M.A., University of Pittsburgh; Ph.D., University of Michigan.  
*Associate Professor of English*
- C. VIRGINIA MYERS, 1946. B.A., College of Wooster; M.A., Radcliffe College; M.Litt., University of Cambridge, England.  
*Assistant Professor of English*
- EVERETT C. MYERS, 1947. B.A., Western Reserve University; Ph.D., Johns Hopkins University.  
*Associate Professor of Biology*
- ARTHUR G. NEAL, 1960. B.A., Concord College; M.A., Ph.D., Ohio State University.  
*Assistant Professor of Sociology*

†First semester 1962-63.

††On leave 1962-65.

- ELIZABETH A. NEIDCKER, 1962. B.S., Ohio State University; M.A., Western Reserve University.  
*Assistant Professor of Speech*
- RALPH B. NELSON, 1960. B.S., Northern Michigan College; M.A., Michigan State University.  
*Instructor in Industrial Arts and Engineering Drawing*
- RICHARD C. NEUMANN, 1961. B.A., M.A., Michigan State University; Certified Public Accountant (Michigan).  
*Instructor in Accounting*
- HAROLD B. OBBE, 1946. B.A., Adrian College; M.A., Ph.D., Ohio State University.  
*Assistant Professor of Speech*
- OTTO G. OCWIRK, 1950. B.F.A., M.F.A., State University of Iowa.  
*Associate Professor of Art*
- NORBERT F. O'DONNELL, 1953. B.A., Wittenberg University; M.A., Ph.D., Ohio State University.  
*Professor of English*
- FRANK CHAPPELL OGG, 1931. B.A., University of New Mexico; M.A., Ph.D., University of Illinois.  
*Professor of Mathematics; Chairman, Department of Mathematics*
- JOHN F. OGLEVEE, 1949. B.A., M.A., Ph.D., Ohio State University.  
*Associate Professor of History*
- LORRENE L. ORT, 1956. B.M., Oberlin College; M.A., Ph.D., Ohio State University.  
*Associate Professor of Education; Director of Student Teaching; Coordinator of Laboratory Experiences in the Bowling Green Public Schools*
- VERGIL K. ORT, 1956. B.A., Defiance College; M.A., University of Michigan; Ph.D., Ohio State University.  
*Associate Professor of Education; Assistant to the Dean, College of Education*
- B. D. OWENS, 1962. B.S., Northwest Missouri State College; Ph.D., University of Pennsylvania.  
*Assistant Professor of Business Administration*
- JANIS LOUISE PALLISTER, 1961. B.A., M.A., University of Minnesota; Certificat, University of Sorbonne, Paris.  
*Instructor in Romance Languages*
- PAUL E. PARNELL, 1960. B.Ed., Brockport State Teachers College; M.A., Ph.D., New York University.  
*Assistant Professor of English*
- BERYL MARGARET PARRISH, 1946. B.S.Ed., M.A., Ohio State University.  
*Associate Professor of English*
- SOPHIE GINN PASTER, 1961. B.S., M.S., Juilliard School of Music.  
*Instructor in Music*
- ALMA J. PAYNE, 1946. B.A., College of Wooster; M.A., Ph.D., Western Reserve University.  
*Professor of English*
- DOYT L. PERRY, 1955. B.S.Ed., Bowling Green State University; M.A., Ohio State University.  
*Professor of Health and Physical Education; Head Football Coach*
- GROVER C. PLATT, 1946. B.A., State University of Iowa; M.A., Tufts University; Ph.D., State University of Iowa.  
*Professor of History*
- VIRGINIA BEVER PLATT, 1947. B.A., University of Washington; M.A., University of California; Ph.D., State University of Iowa.  
*Professor of History*

- JOSEPH G. PRICE, 1962. B.A., St. Joseph's College; M.A., Georgetown University; Ph.D., Bryn Mawr College.  
*Assistant Professor of English*
- BERNARD RABIN, 1955. B.Ed., Plattsburg State Teachers College; M.A., Syracuse University; Ed.D., Columbia University.  
*Associate Professor of Education*
- KARL G. RAHDERT, 1960. B.S., M.B.A., D.B.A., Indiana University.  
*Associate Professor of Business Administration*
- MICHAEL R. RAMON, 1959. B.A., St. John Baptist College, Spain; M.A., Washington University, St. Louis; Ph.D., Northwestern University.  
*Assistant Professor of Romance Languages; Chairman, Department of Romance Languages*
- DANIEL B. RAMSDELL, 1961. B.A., M.A., Ph.D., University of Wisconsin.  
*Instructor in History*
- JOHN H. REILLY, 1961. B.A., Syracuse University; M.A., University of Wisconsin.  
*Instructor in Romance Languages*
- EVELYN J. REISER, 1962. B.S., M.A., Bowling Green State University.  
*Instructor in English*
- VICTOR E. REPP, 1960. B.S., New York State Teachers College at Oswego; M.Ed., University of Maryland.  
*Instructor in Industrial Arts*
- CHARLES C. RICH,† 1958. B.A., Wittenberg University; M.A., Ph.D., Harvard University.  
*Assistant Professor of Geology*
- ROBERT G. RIEGLE, 1948. B.S.Ed., Bowling Green State University; LL.B., Ohio State University. (Licensed attorney in Ohio and Federal Courts, and I.C.C.)  
*Associate Professor of Business Administration*
- ELTON C. RINGER, 1946. B.S.Ed., M.S.Ed., Bowling Green State University.  
*Assistant Professor; Comptroller*
- WILLIAM R. ROCK, 1958. B.A., Gettysburg College; M.A., Ph.D., Duke University.  
*Assistant Professor of History*
- A. ROBERT ROGERS, 1959. B.A., University of New Brunswick; M.A., University of Toronto; Academic Post-Graduate Diploma in Librarianship, University of London.  
*Assistant Professor of Library Science; Acting Director, University Library*
- BENJAMIN G. ROSENBERG,†† 1955. B.A., M.A., Ph.D., University of California.  
*Associate Professor of Psychology*
- COLVIN ROSS, 1959. B.A., Yankton College; M.A., Ph.D., Michigan State University.  
*Assistant Professor of Education*
- JAMES J. RUEHL, 1956. B.S., Ohio State University; M.S., Bowling Green State University.  
*Instructor in Health and Physical Education; Assistant Football Coach*
- PAUL D. RUNNING, 1956. B.A., St. Olaf College; M.F.A., Ph.D., State University of Iowa.  
*Associate Professor of Art*
- ELFREDA M. RUSHER, 1950. B.S.Ed., Ohio Northern University; M.A., Ph.D., Ohio State University.  
*Associate Professor of Business Education*
- MAURICE O. SANDY, 1962. B.S., Bowling Green State University; M.S., University of California at Los Angeles.  
*Instructor in Health and Physical Education; Director, Men's Intramural Athletics*

†On leave first semester 1962-63.

††On leave 1962-63.

- ALLAN SAWDY, 1944. B.S., Michigan State Normal College; M.Ed., Bowling Green State University.  
*Assistant Professor of Health and Physical Education; Head Athletic Trainer*
- WILLIAM F. SCHMELTZ, 1947. B.B.A., University of Toledo; M.B.A., Harvard Graduate School of Business Administration; Certified Public Accountant (Ohio).  
*Professor of Accounting; Dean, College of Business Administration; Military Coordinator of ROTC Units*
- MAXINE M. SCHNITZER, 1962. B.A., College of Wooster; M.A., Ohio State University; Ph.D., Michigan State University.  
*Instructor in Speech*
- ALICE P. SCHOCKE, 1946. B.S.Ed., Miami University; M.S., Ohio State University.  
*Associate Professor of Home Economics*
- WARREN J. SCHOLLER, 1958. B.S., Ohio State University; M.A., Xavier University.  
*Instructor in Health and Physical Education; Assistant Basketball Coach*
- JOHN R. SCHUCK, JR., 1960. B.A., Ohio State University; M.A., Bowling Green State University; Ph.D., Ohio State University.  
*Instructor in Psychology*
- DONOVAN SCHUMACHER, 1962. B.M., Oberlin College.  
*Assistant Professor of Music*
- KARL M. SCHURR, 1962. B.A., M.A., Bowling Green State University; Ph.D., University of Minnesota.  
*Instructor in Biology*
- J. CONRAD SCHWARZ, 1962. B.S., Pennsylvania State University; M.A., Ohio State University.  
*Instructor in Psychology*
- ROBERT P. SECRIST, 1961. B.A., Bowling Green State University.  
*Assistant Instructor; Librarian*
- CARL E. SHAW, 1954.\* B.Ed., Eastern Illinois State University; M.A., Miami University; Ph.D., Purdue University.  
*Assistant Professor of Psychology; Counseling Center*
- HOWARD L. SHINE, 1960. B.A., M.A., Bowling Green State University; LL.B., George Washington University. (Licensed attorney in District of Columbia and Federal Courts)  
*Instructor in Speech*
- DZIDRA SHLLAKU, 1962. Graduate (Abitur), Classical Gymnasium, Zeltgave, Latvia; Ph.D., University of Bologna, Italy.  
*Assistant Professor of German and Russian*
- EMERSON C. SHUCK, 1943. B.S., Otterbein College; M.A., Ohio State University; Ph.D., University of Wisconsin.  
*Professor of English; Dean, College of Liberal Arts*
- BERTIL G. F. SIMA, 1946. B.A., State Experimental College, Stockholm, Sweden; M.A., Ph.D., University of Leipzig, Germany.  
*Associate Professor of German*
- WILLARD E. SINGER, 1927. B.S., Capital University; B.E.E., M.A., Ph.D., Ohio State University.  
*Professor of Physics; Chairman, Department of Physics*
- EDGAR B. SINGLETON, 1959. B.S., M.S., Ohio University; Ph.D., Ohio State University.  
*Assistant Professor of Physics*
- CHARLES B. SMITH, 1956. B.S., Drake University; M.A., Highlands University; Ed.D., Colorado State College.  
*Assistant Professor of Business Education*

\*Not continuous service.



- DONNAL V. SMITH, 1961. B.S., Bowling Green State University; M.A., Ph.D., University of Chicago; LL.D., Bowling Green State University.  
*Professor of History; Dean of Students*
- R. FRANKLIN SMITH, 1961. B.A., Kent State University; M.A., Ohio University; Ph.D., University of Wisconsin.  
*Instructor in Speech*
- GEORGE R. SNYDER, 1949. B.A., Heidelberg College; M.A., Ph.D., Ohio State University.  
*Professor of Education*
- HARRY S. SPANGLER, 1947. B.S., M.A., Ph.D., University of North Dakota; Artist Diploma, Cincinnati Conservatory of Music; Study in Paris, France, and at Harvard University and the Juilliard School of Music.  
*Associate Professor of Music*
- SHERMAN M. STANAGE,† 1959. B.A., University of New Mexico; M.Th., Iliff School of Theology; Ph.D., University of Colorado.  
*Assistant Professor of Philosophy; Chairman, Department of Philosophy*
- HAROLD GLENDON STEELE, 1946. B.A., Northwestern University; M.A., Ohio State University.  
*Associate Professor of English; Assistant Dean, College of Liberal Arts*
- WARREN E. STELLER, 1924. B.A., Oberlin College; M.A., Columbia University.  
*Professor of Health and Physical Education*
- ROBERT E. STINSON, 1949. B.F.A., University of Illinois; M.A., M.F.A., State University of Iowa.  
*Assistant Professor of Art*
- SIDNEY C. STONE, 1944. B.A., M.A., Ohio Wesleyan University.  
*Associate Professor of Speech; Director, University Radio Station WBGU*
- GALEN STUTSMAN, 1950. B.S.Ed., M.A., Ph.D., Ohio State University.  
*Professor of Business Education*
- BRIAN SUTTON-SMITH, 1956. B.A., M.A., Dip. Ed., Ph.D., University of New Zealand.  
*Associate Professor of Psychology*
- JAMES A. TAYLOR, 1960. B.A., Kent State University; M.S., Ph.D., University of Illinois.  
*Instructor in Geography*
- WALLACE W. TAYLOR, JR., 1957. B.A., Emory University; M.Ed., University of Georgia.  
*Assistant Professor; Dean of Men*
- CHARLOTTE P. TIMM, 1961. B.A., M.A., M.A. in L.S., University of Michigan.  
*Instructor; Librarian*
- JACQUELINE E. TIMM, 1946. B.A., M.A., Ph.D., University of Texas.  
*Professor of Political Science*
- MAE A. TINDALL, 1944. B.A., Willamette University; M.A., Columbia University.  
*Assistant Professor of Education*
- HAROLD E. TINNAPPEL, 1949. B.S.Ed., M.A., Ph.D., Ohio State University.  
*Professor of Mathematics*
- AIDA K. TOMEH, 1962. B.A., American University of Beirut; M.A., Ph.D., University of Michigan.  
*Assistant Professor of Sociology*
- AMY TORGERSON, 1948. B.S., Central Missouri State College; M.A., New York University.  
*Associate Professor of Health and Physical Education*
- ROLAND M. TORGERSON, 1947. B.S., M.A., University of Minnesota.  
*Professor of Industrial Arts*

†On leave second semester 1962-63.

- RALPH N. TOWNSEND, 1960. B.S., Illinois Wesleyan University; M.S., Ph.D., University of Illinois.  
*Assistant Professor of Mathematics*
- ALEXANDER TSAMBASSIS,† 1962. B.A., University of Athens, Greece; B.D., Seabury-Western Episcopal Seminary; Ph.D., Northwestern University and Garrett Biblical Institution.  
*Visiting Associate Professor of Philosophy*
- DUANE E. TUCKER, 1959. B.A., Kansas State Teachers College at Emporia; M.A., Ph.D., University of Wisconsin.  
*Assistant Professor of Speech*
- TOM HOLLINGSWORTH TUTTLE, 1946. B.A., M.A., University of Texas; Ph.D., University of Southern California.  
*Professor of Philosophy*
- ROBERT W. TWYMAN, 1948. B.A., Indiana University; M.A., Ph.D., University of Chicago.  
*Associate Professor of History; Chairman, Department of History*
- LELAND S. VAN SCOYOC, 1946. B.S., M.S., Kansas State University; D.B.A., Indiana University.  
*Professor of Economics; Chairman, Department of Economics*
- GLENN I. VAN WORMER, 1947. B.S.Ed., M.Ed., Bowling Green State University.  
*Associate Professor; Registrar*
- JACOB VERDUIN, 1955. B.S., M.S., Ph.D., Iowa State College of Agriculture and Mechanic Arts.  
*Professor of Biology; Chairman, Department of Biology*
- BRUCE R. VOGELI, 1959. B.S., Mt. Union College; M.A., Kent State University; Ph.D., University of Michigan.  
*Associate Professor of Mathematics*
- HENRY VOGTSBERGER, 1959. B.A., Oberlin College; M.D., Western Reserve University.  
*Associate Professor; University Physician*
- HARMON VOSKUIL, 1946. B.A., Hope College; M.A., University of Minnesota.  
*Associate Professor of Economics*
- WILLARD F. WANKELMAN, 1946. B.S.Ed., M.A., Ohio State University.  
*Professor of Art; Chairman, Department of Art*
- WARREN C. WATERHOUSE, 1959. B.Ed., Wisconsin State College at Eau Claire; M.B.A., University of Denver; Ph.D., Northwestern University.  
*Associate Professor of Business Administration*
- MARY A. WATT, 1954. B.S., Simmons College; M.S., Wellesley College; Ph.D., State University of Iowa.  
*Associate Professor of Health and Physical Education*
- JOSEPH E. WEBER, 1937. B.A., M.A., Ph.D., Indiana University.  
*Professor of Chemistry*
- MARTHA GESLING WEBER, 1946. B.A., Ohio Northern University; M.A., Ohio State University; Ph.D., Duke University.  
*Professor of Education; Director, Reading Center*
- HARVEY D. WEDEEN, 1961. B.S., Columbia University; M.S., Juilliard School of Music.  
*Instructor in Music*
- ROY J. WEGER, 1953. B.A., Southeastern State College, Oklahoma; M.A., Colorado State College of Education.  
*Associate Professor of Music; Director of Bands*

†Second semester 1962-63.

- JOHN EVERETT WENRICK, 1947. B.A., M.A., Ph.D., Ohio State University.  
*Professor of Psychology*
- ROBERT N. WHITEHURST, 1962. B.A., Butler University; M.S., Purdue University.  
*Instructor in Sociology*
- MARY ELIZABETH WHITNEY, 1952. B.S., University of Michigan; M.S., New York University.  
*Assistant Professor of Health and Physical Education*
- RAYMOND C. WHITTAKER, 1949. B.S., M.A., Bowling Green State University.  
*Assistant Professor; Assistant Dean of Students*
- ROBERT H. WHITTAKER, 1941. B.S.Ed., Miami University; M.A., Bowling Green State University.  
*Associate Professor of Health and Physical Education; Track Coach*
- E. ELOISE WHITWER, 1946. B.A., Grand Island College; M.A., University of Nebraska.  
*Associate Professor of Biology*
- PHILIP R. WIGG, 1948. B.A., Park College; M.F.A., State University of Iowa.  
*Associate Professor of Art*
- ALLEN V. WILEY, 1946. B.A., M.A., Lafayette College.  
*Assistant Professor of Economics*
- JAMES R. WILKINSON, 1962. B.S.B.A., Wheaton College; M.B.A., University of Michigan; Certified Public Accountant (California) (Michigan).  
*Associate Professor of Accounting*
- FRED E. WILLIAMS, 1959. B.S., M.A., Florida State University; Ed.D., Indiana University.  
*Assistant Professor of Education; Director, Audio-Visual Services*
- WILEY J. WILLIAMS, 1961. B.S., University of North Carolina; M.A., George Peabody College for Teachers; M.P.A., University of Michigan.  
*Instructor; Librarian*
- JACKIE W. WILSON, 1962. B.B.A., M.A., University of Oklahoma.  
*Instructor in Business Administration*
- E. HARRY WOHLER, 1946. B.A., Wittenberg University; M.A., University of Toledo.  
*Assistant Professor of Mathematics*
- VERNON WOLCOTT, 1962. B.M., Curtis Institute; M.S.M., Union Theological Seminary.  
*Instructor in Music*
- WARREN J. WOLFE, 1961. B.A., DePauw University; M.A., Ph.D., Indiana University.  
*Assistant Professor of Romance Languages*
- BONADINE J. WOODS, 1962. B.S., M.S., Ohio State University.  
*Instructor in Home Economics*
- JAMES CLYDE WRIGHT, 1947. B.A., Muskingum College; M.A., Ph.D., Ohio State University.  
*Associate Professor of Psychology; Assistant Director, Counseling Center*
- RAYMOND YEAGER, 1950. B.S.Ed., M.A., Bowling Green State University; Ph.D., Ohio State University.  
*Associate Professor of Speech*
- MARGARET YOCOM, 1929. B.A., Oberlin College; B.S. in L.S., Western Reserve University.  
*Associate Professor of Library Science; Librarian*
- CHARLES W. YOUNG, 1945. B.A., Ohio Wesleyan University; M.A., Ph.D., Ohio State University.  
*Professor of Education*
- FRED J. YOUNG, 1961. B.M.Ed., University of Wichita; M.M., Oberlin Conservatory of Music.  
*Instructor in Music*

- RICHARD A. YOUNG, 1959. B.S.Ed., M.A., Ohio State University.  
*Instructor in Health and Physical Education; Assistant Football Coach; Head Baseball Coach*

## FACULTY IN MILITARY SCIENCE\*

- WILLIAM R. SCRUGGS, 1962. B.S., B.A., Virginia Polytechnic Institute; Coast Artillery School; Anti-aircraft and Guided Missile School; The Air Defense School; Lieutenant Colonel, U.S. Army.  
*Professor of Military Science; Chairman, Department of Military Science*
- JAMES P. JOHNSON, 1961. B.G.E., University of Omaha; Infantry School; Airborne School; Captain, U.S. Army.  
*Assistant Professor of Military Science*
- JAMES G. HOYE, 1961. B.S., University of Minnesota; Quartermaster Advanced Course; Petroleum Supply Course; Captain, U.S. Army.  
*Assistant Professor of Military Science*
- EDWARD G. NEWBY, 1958. Master Sergeant, U.S. Army.  
*Administrative Assistant*
- MAYNARD R. McCLAIN, 1962. Master Sergeant, U.S. Army.  
*Administrative Assistant*
- JACK E. HUSTON, 1961. Sergeant First Class, U.S. Army.  
*Assistant Instructor in Military Science*
- NICHOLAS KALIVAS, 1962. Sergeant First Class, U.S. Army.  
*Administrative Assistant*
- LEROY J. JACOBS, 1961. Sergeant First Class, U.S. Army.  
*Assistant Instructor in Military Science*

## FACULTY IN AIR SCIENCE\*

- WARREN E. PETERS, 1960. B.S.B.A., Trinity University; M.Ed., Bowling Green State University; Air Tactical School, Air Command and Staff School, Academic Instructors School, The Air University; Major, U.S. Air Force.  
*Professor of Air Science; Chairman, Department of Air Science*
- JOHN G. BERRY, 1961. B.S., Wisconsin State College; Academic Instructors School, The Air University; Captain, U.S. Air Force.  
*Assistant Professor of Air Science*
- FLOYD J. BRAZILE, † 1963. B.S., University of Oklahoma; Captain, U.S. Air Force.  
*Assistant Professor of Air Science*
- JOSEPH F. BOHREN, 1962. B.S., University of Florida; M.Ed., Lady of the Lake College; Academic Instructors School, The Air University; Air Force Russian Language School, Syracuse University; Captain, U.S. Air Force.  
*Assistant Professor of Air Science*
- ALFRED W. KREPS, 1962. Technical Sergeant, U.S. Air Force.  
*Administrative Assistant*
- LEWIS A. DENNY, 1959. Technical Sergeant, U.S. Air Force.  
*Administrative Assistant*
- RAYMOND J. BOWERS, 1961. Technical Sergeant, U.S. Air Force.  
*Administrative Assistant*

\*Listed in order of military rank.

†Since January 7, 1963.

## PART-TIME FACULTY

- DOROTHY H. ABELL. B.S., University of Illinois; M.A., Columbia University.  
*Instructor in English, Fremont and Sandusky Branches*
- ROBERT ANDREACH. B.A., Rutgers University; M.A., New York University.  
*Instructor in English, Sandusky Branch*
- GERTRUDE BLISS. B.S.Ed., Ohio State University; M.A., Columbia University.  
*Instructor in Health and Physical Education, Fremont Branch*
- JAMES G. BOND. B.A., Baldwin-Wallace College; M.A., Bowling Green State University; Ph.D., New York University.  
*Instructor in Psychology, Fremont Branch*
- RAYMOND BRICKLEY. B.S.Ed., Miami University; M.A., Western Reserve University.  
*Director, Sandusky Branch*
- ROBERT R. BROWN. B.S.Ed., M.A., Miami University.  
*Instructor in Biology, Sandusky Branch*
- MARVIN L. BRUBAKER. B.A., Susquehanna University.  
*Laboratory Assistant, Department of Physics*
- HARRY W. BUCKINGHAM. B.S.B.A., Bowling Green State University.  
*Instructor in Accounting, Fostoria Branch*
- HELEN CALAWAY. B.S., Ball State Teachers College; M.S., Ph.D., Purdue University.  
*Instructor in Home Economics*
- ERVIN CARPENTER. M.S. in Ind. Ed., Stout Institute.  
*Instructor in Engineering Drawing, Sandusky Branch*
- RUSSELL CAYTON. B.S.Ed., M.Ed., Bowling Green State University.  
*Director, Bryan Branch*
- ALICE B. CHAFFIN. B.S.Ed., Bowling Green State University; M.A.Ed., University of Michigan.  
*Instructor in Education, Sandusky Branch*
- CATHERINE B. CLARK. B.S.Ed., M.S.Ed., Bowling Green State University.  
*Instructor in Education, Sandusky Branch*
- GEORGE CRANCH. B.S., Case Institute of Technology.  
*Instructor in Chemistry, Fostoria Branch*
- PAUL DAHNKE. B.A., M.A., Miami University.  
*Instructor in Mathematics, Sandusky Branch*
- MARVALENE L. DAY. B.Ph., University of Chicago; M.A., Columbia University.  
*Supervisor of Student Teaching*
- GRACE DURRIN. B.A., Hope College; M.A., University of Michigan.  
*Lecturer in English*
- GARL E. GARBER. B.S., Manchester College; M.A., University of Michigan.  
*Supervisor of Student Teaching*
- EMILY L. GEER. B.S.Ed., M.A., Bowling Green State University; Ph.D., Western Reserve University.  
*Instructor in History, Fremont Branch*
- GORDON M. HART. B.S., M.S.Ed., Bowling Green State University.  
*Director, Fremont Branch*
- JEREMIAH T. HERLIHY. B.S., University of Massachusetts; M.S., University of Wisconsin.  
*Instructor in Chemistry, Sandusky Branch*
- BRUCE W. HERRIN. B.S., M.A., Indiana University.  
*Instructor in Sociology*

- KENNETH HILLE. B.S., Wagner Memorial College; M.A., Bowling Green State University.  
*Instructor in Biology, Fremont Branch*
- CLYDE HISSONG. B.S.Ed., Miami University; M.A., Columbia University; Ph.D., Ohio State University; LL.D., Miami University.  
*Instructor in Education, Bryan Branch*
- CLAUDE HUSTED. B.A., Central Normal College; M.S.Ed., Indiana University.  
*Instructor in Mathematics, Bryan Branch*
- RUTH E. JOHNSON. B.S.Ed., Bowling Green State University; M.A., Teachers College, Columbia University.  
*Instructor in Education, Bryan Branch*
- EMILIA NAVARRO KELLEY. B.A., University of Madrid.  
*Instructor in French*
- JOSEPH E. KIVLIN. Ph.D., Pennsylvania State University.  
*Instructor in Sociology, Sandusky Branch*
- HARLAND A. LEHTOMAA. B.S., M.Ed., Bowling Green State University.  
*Supervisor of Student Teaching*
- VIRGINIA E. LELAND. B.A., Carson-Newman College; M.A., Ph.D., University of Chicago.  
*Assistant Professor of English*
- LOUISE L. LOUYS. B.S., M.A., Bowling Green State University.  
*Instructor in Education, Fostoria Branch*
- MARY MARKEY. B.A., Ball State Teachers College; M.A., Bowling Green State University.  
*Instructor in English, Fremont Branch*
- ROBERT W. MCCracken. B.A., Ohio Wesleyan University; M.A., Ph.D., Ohio State University.  
*Instructor in Education, Fostoria Branch*
- MILDRED MCCRYSTAL. B.S.Ed., Ohio State University.  
*Instructor in Music, Sandusky Branch*
- MAURICE NEWBURGER. B.A., M.A., Ph.D., University of Cincinnati.  
*Instructor in Psychology, Fostoria Branch*
- REDA NIEDERHOFER. B.S.Ed., M.A., Bowling Green State University.  
*Instructor in Biology, Sandusky Branch*
- R. B. OLDFATHER. B.A., Heidelberg College; M.A., Ohio State University; Ed.D., Western Reserve University.  
*Instructor in Education, Fremont Branch*
- RAYMOND O. ORWIG. B.S.Ed., Bowling Green State University; M.A., Columbia University.  
*Director, Fostoria Branch*
- JOHN W. PARLETTE. B.A., Ohio Wesleyan University; M.A., Cornell University.  
*Supervisor of Student Teaching*
- GATES L. PLUMB. B.A., Oberlin College; D.F., University of Mexico; M.S. in S.S., Boston University.  
*Instructor in Sociology*
- WILLIAM L. RAMSEY. B.S.Ed., Wilmington College; M.Ed., Xavier University; Ed.D., Colorado State College.  
*Instructor in Education, Fremont Branch*
- MABEL E. ROBROCK. B.A., Hiram College; B.S. in L.S., Western Reserve University.  
*Instructor in English, Bryan Branch*

- HOWARD W. ROGGE. B.S., Ohio Northern University; M.S., Ohio State University.  
*Instructor in Education, Bryan Branch*
- MARY LOU RUCH-HIRZEL. B.S., University of Toledo.  
*Intern Instructor in Geology*
- ADELINE SCHMIDLIN. B.S., Slippery Rock State Teachers College; M.Ed., Pennsylvania State College.  
*Instructor in Speech, Sandusky Branch*
- BENOIT R. SCHNEIDER. B.A., B.S.Ed., Bowling Green State University; M.A., Ohio State University.  
*Laboratory Instructor in Chemistry, Sandusky Branch*
- SAM B. SHEARER, JR. B.S.Ed., Ohio University; M.A., Kent State University; M.S. in L.S., Western Reserve University.  
*Instructor in English, Sandusky Branch*
- ALBERT SIEKERES. B.S.Ed., M.A., Bowling Green State University.  
*Instructor in Biology, Fostoria Branch*
- BERNICE C. SIMA. B.S.Ed., Western Reserve University; M.S.Ed., Bowling Green State University.  
*Supervisor of Student Teaching*
- RUTH SLOTTERBECK. B.S.Ed., Bowling Green State University.  
*Instructor in Music*
- FRANK W. SMITH. B.A., M.A., Colorado State College of Education.  
*Instructor in Art, Sandusky Branch*
- RUSSELL B. SMITH. B.A., Ohio Wesleyan University; M.A., Ph.D., Ohio State University.  
*Instructor in Education, Fremont Branch*
- GEORGE STING. B.S., Ohio State University; M.S., Bowling Green State University.  
*Instructor in Education, Fremont Branch*
- ALICE STRUZINSKY. B.S., New York State College at Cortland.  
*Teaching Assistant in Health and Physical Education*
- WILLIAM B. THOMAS. B.A., Ohio State University; M.A., University of Maryland.  
*Instructor in English*
- LESTER R. VINING. B.A., Northland College; M.A., Hartford School of Religious Education; B.D., Andover Newton Theological School; M.S.W., University of Michigan School of Social Work.  
*Instructor in Sociology*
- PAULINE WALLACE. B.S.Ed., Ashland College; M.A., Columbia University.  
*Instructor in Education, Sandusky Branch*
- HELEN KWALWASSER WEDEEN. Student of Ivan Galamian, Juilliard School of Music.  
*Instructor in Music*
- CHARLOTTE M. WINZELER. B.S.Ed., M.A., Bowling Green State University.  
*Instructor in English, Bryan Branch*

## TEACHING FELLOWS

- KENNETH D. ALLEY, B.S.Ed., M.A., Southern Illinois University. *English*
- GORDON G. BEHM, B.S., Heidelberg College; M.Ed., Bowling Green State University.  
*Education*
- \*\*MARION BLUE, B.S.Ed., Ohio Northern University; M.Ed., Bowling Green State University. *Education*
- DANIEL V. BRISLANE, H.B.A., Xavier University; M.A., Northwestern University.  
*English*

\*\*Second semester 1962-63.

- WANDA J. DEAN, B.A.Ed., East Central State College; M.A., Oklahoma State University. *English*
- PHYLLIS H. EARNHART, B.A., San Diego State College; M.A., Bowling Green State University. *English*
- DAVID H. GOLDSMITH, B.A., M.A., Bowling Green State University. *English*
- RICHARD F. GOTTIER, B.A., Asbury College; M.A., Bowling Green State University.  
*Psychology*
- PETER LEPAGE, B.A., Ohio Wesleyan University; M.A., Bowling Green State University. *English*
- \*\*ERNEST LOHMAN, B.S.Ed., M.Ed., Bowling Green State University. *Education*
- \*\*GWENDOLYN P. LOUGHEED, B.A., University of British Columbia; M.A., Bowling Green State University. *English*
- LEON NEEB, B.S., Huntington College; M.Ed., Bowling Green State University.  
*Education*
- NEIL A. POHLMAN, B.S.Ed., M.Ed., Bowling Green State University. *Education*
- ANN N. RIDGEWAY, B.S.Ed., B.A., M.A., Intern Study Certificate in English, Bowling Green State University. *English*
- FREDRIC A. ROUX, B.A., M.A., University of New Hampshire. *English*
- ELIZABETH S. STEELE, B.A., Butler University; M.A., University of New Mexico.  
*English*
- \*\*WILLIAM B. THOMAS, B.A., Ohio State University; M.A., University of Maryland.  
*English*
- WILLIAM D. WAGNER, B.S., Wisconsin State College at Eau Claire; M.A., Bowling Green State University. *English*
- JOHN WATANEN, JR., B.S.Ed., M.S.Ed., State University of New York at Oneonta.  
*English*
- \*JEAN C. WEIHL, B.S.Ed., M.A., Bowling Green State University. *Art*
- MARTHA WERTHEIM, B.A., Findlay College; M.A., Bowling Green State University.  
*English*
- JOHN H. WILLIAMS, B.A., University of Denver; M.S., University of Washington.  
*Health and Physical Education*

## GRADUATE ASSISTANTS

- JANE AARNES, B.A., Knox College. *English*
- WAYNE AMBROSE, B.S.Ed., Ashland College. *Health and Physical Education*
- LAMONTE ANDERSON, B.S.Ed., Bowling Green State University. *Art*
- CLARK ARCHER, B.S., Mount Union College. *Mathematics*
- JAMES S. BIDDLE, B.S.Ed., Bowling Green State University. *Mathematics*
- LESTER D. BIGELOW, B.S.B.A., Bowling Green State University. *Business Administration*
- \*VIRGINIA L. BLEEKS, B.S.Ed., Bowling Green State University. *Health and Physical Education*
- JOHN S. BOTTS, B.F.A., Bowling Green State University. *Art*
- \*\*DAVID BRANNIGAN, B.S., Suffolk University. *Biology*
- \*\*WILLIAM J. BRINDLE, B.A., Michigan State University. *Sociology*

\*First semester 1962-63.

\*\*Second semester 1962-63.